



**MATRIX**



FROM PLAN TO REALITY:

# CLOSING THE EXECUTION GAP IN NUCLEAR PROJECTS

## ▶ GETTING STARTED

At the outset, the project looked solid.

The schedule was well defined. Cost projections were within expectations. Engineering milestones were aligned with procurement and construction plans. On paper, everything pointed toward success. But as construction progressed, challenges began to emerge.

## ▶ ADDRESSING PROJECT CHALLENGES

Field conditions differed from initial assumptions. Coordination gaps between client and vendor stakeholders led to delays in critical work. Information from the field was not always communicated clearly or quickly enough across teams, creating a lag between actual conditions and project reporting. What once appeared manageable in monthly updates became increasingly difficult to correct in real time.

As these gaps widened, the disconnect between planning and execution became more visible,

impacting productivity, increasing risk, and putting pressure on both schedule and cost.

This scenario is not unique. Across the nuclear industry, projects often encounter an “execution gap”—the space between what is planned and what is actually happening in the field.

MATRIX engages early to help close that gap.

## ▶ CLOSING THE EXECUTION GAP BY INTEGRATING DIRECTLY INTO THE TEAM

From the outset, MATRIX works alongside client and vendor stakeholders to establish alignment, transparency, and shared accountability. By deploying highly qualified, field-experienced professionals, MATRIX integrates directly into project teams, bridging communication gaps and ensuring coordination across engineering, procurement, and construction.

Clear and open communication is established early and maintained often, enabling real-time sharing of field conditions, faster escalation of

issues, and more informed decision-making across all stakeholders.

With a consistent presence in the field, MATRIX personnel conduct routine safety observations, engage directly with craft and supervision, and issue timely corrective action reports. This proactive, boots-on-the-ground approach helps identify and resolve risks before they escalate—keeping safety, quality, and execution aligned with project objectives.

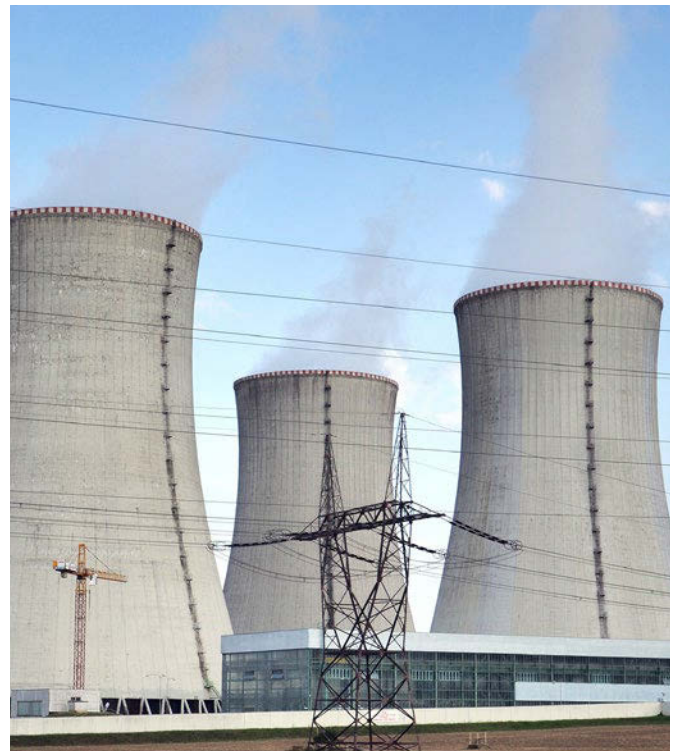
At the same time, MATRIX connects real-time field insight with project controls, providing accurate, up-to-date visibility into project performance and eliminating the lag between what is happening and what is being reported.

By fostering collaboration, maintaining continuous communication, and delivering hands-on field oversight, MATRIX helps ensure that planning and execution remain aligned—reducing risk, protecting schedules, and controlling costs.

Because in nuclear projects, success is never defined by the plan—it's defined by how well that plan is executed.

### ► EXECUTE YOUR PROJECTS BY PARTNERING WITH MATRIX

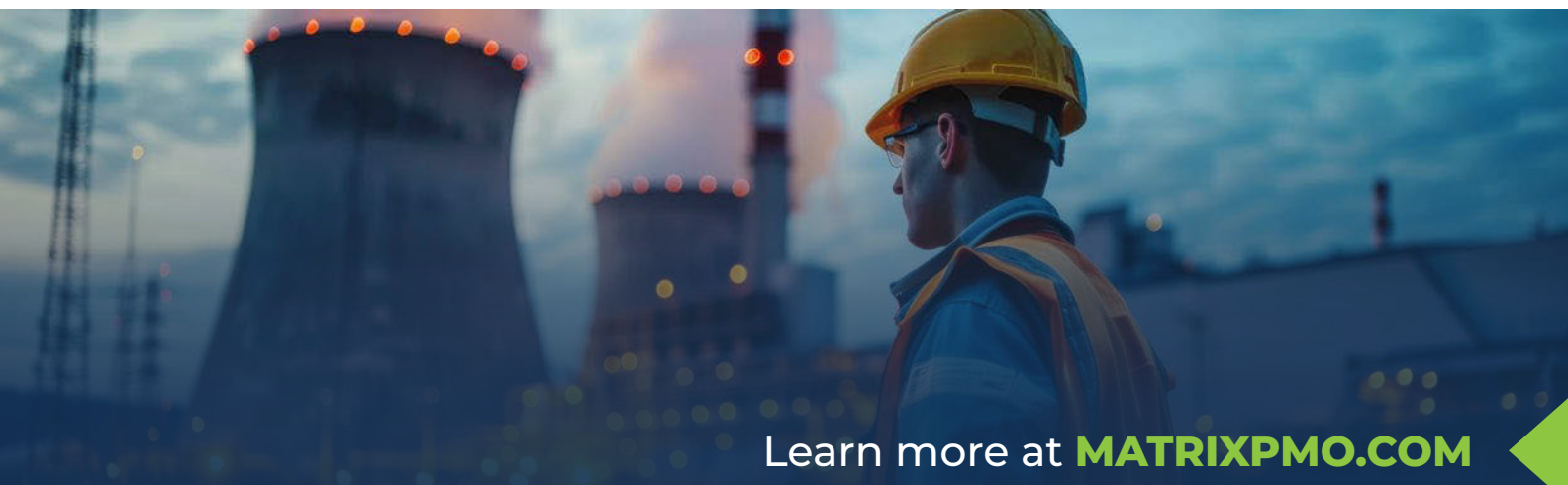
MATRIX is *your* project management office. We provide experienced professionals and



project services tailored specifically to nuclear environments.

Our specialized services include contingent staffing, direct hiring, consulting, project management, project controls, planning, scheduling, managed tasks, field oversight, cost support, and outage-focused resources.

We understand the pace, rigor, and accountability required to support safe, efficient, and compliant nuclear power project execution. Reach out to us today for more information.



Learn more at [MATRIXPMO.COM](https://MATRIXPMO.COM)